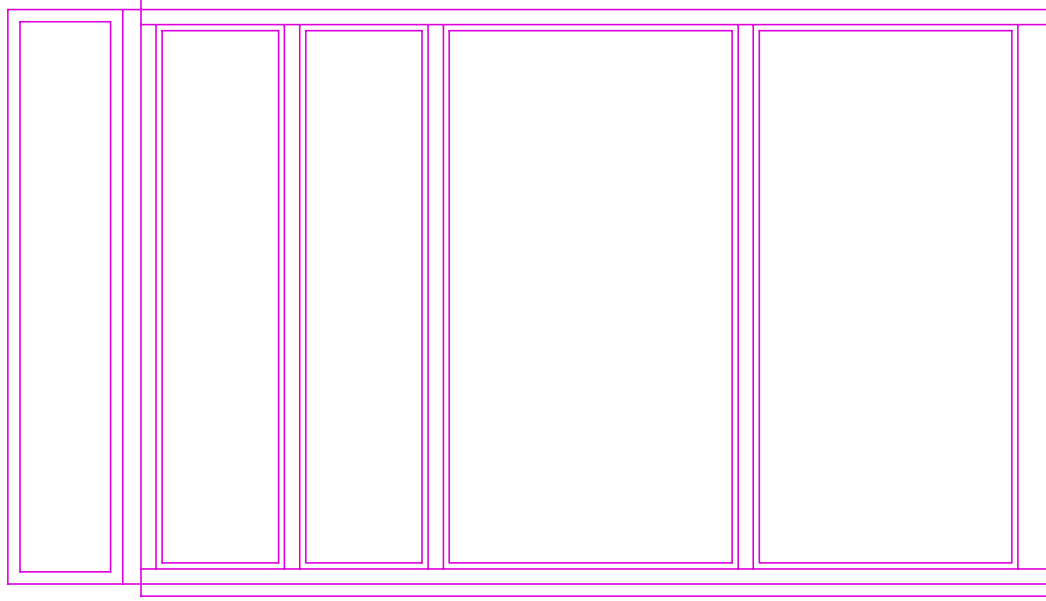
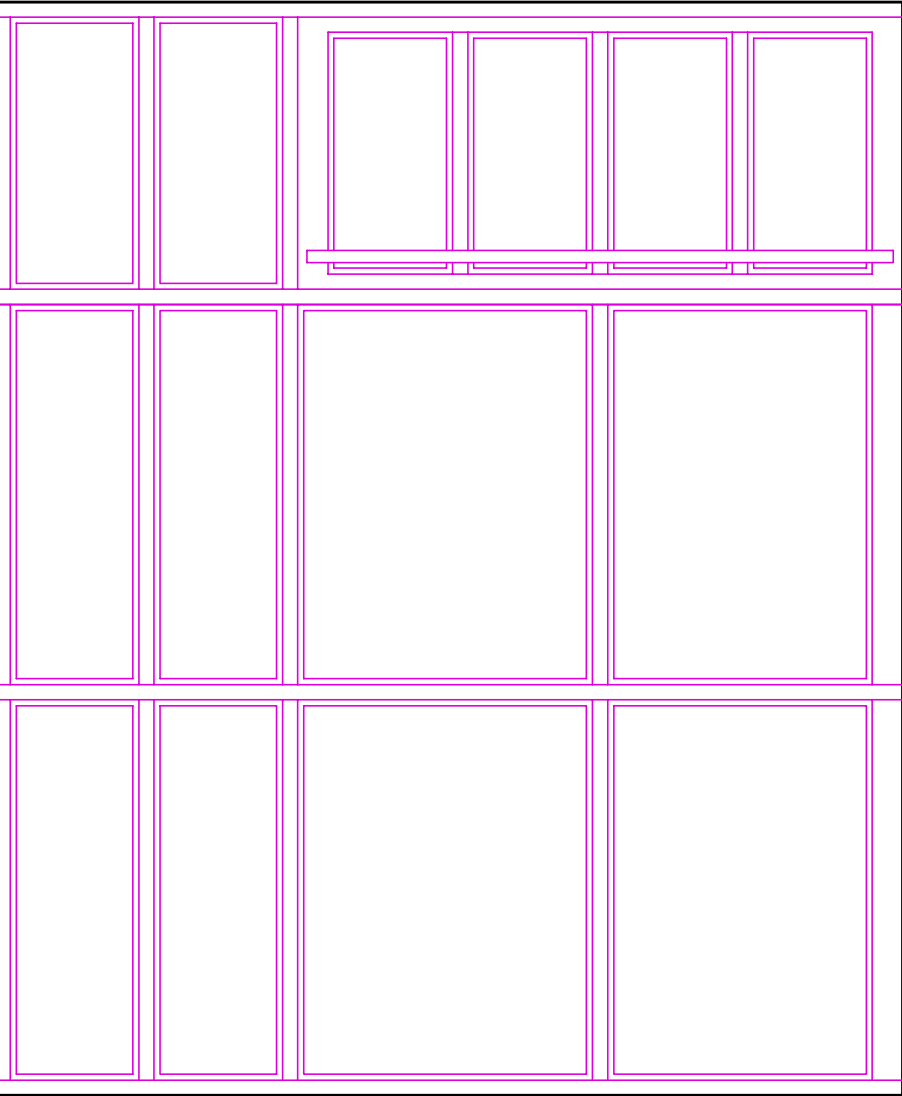


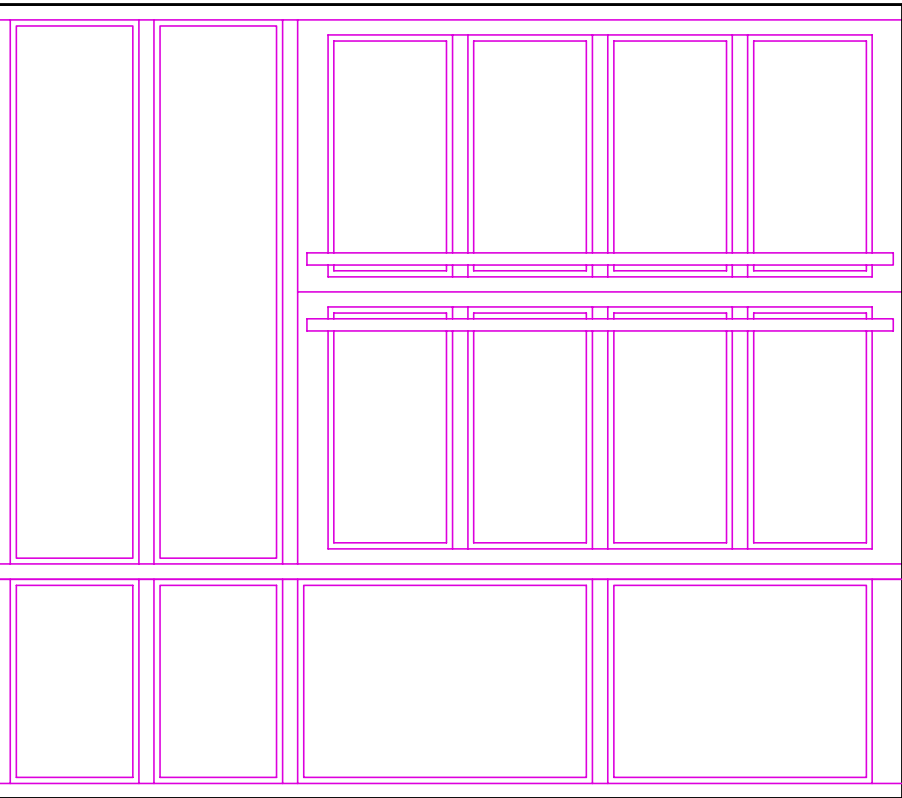
element A-6 (1 ud)
interior



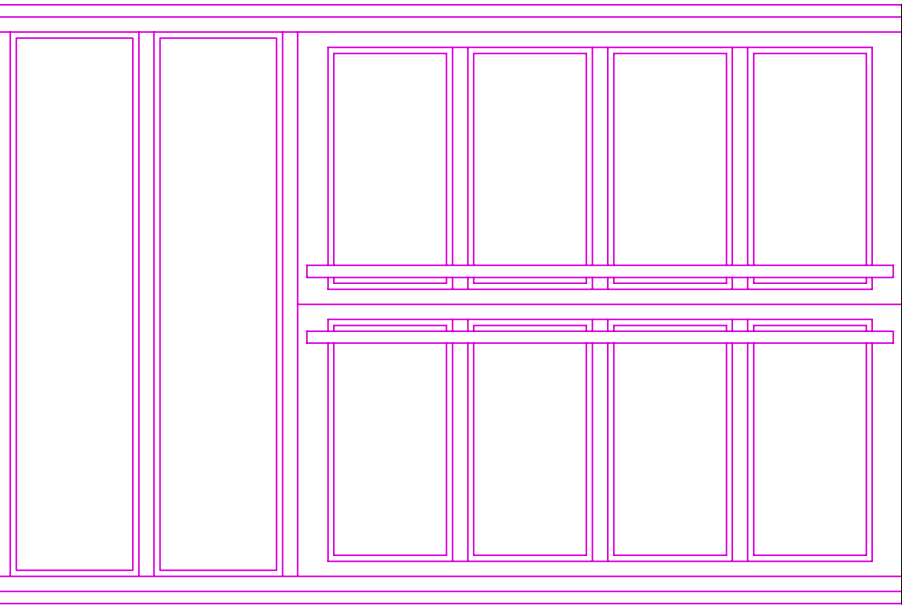
element A-5 (1 ud)
interior



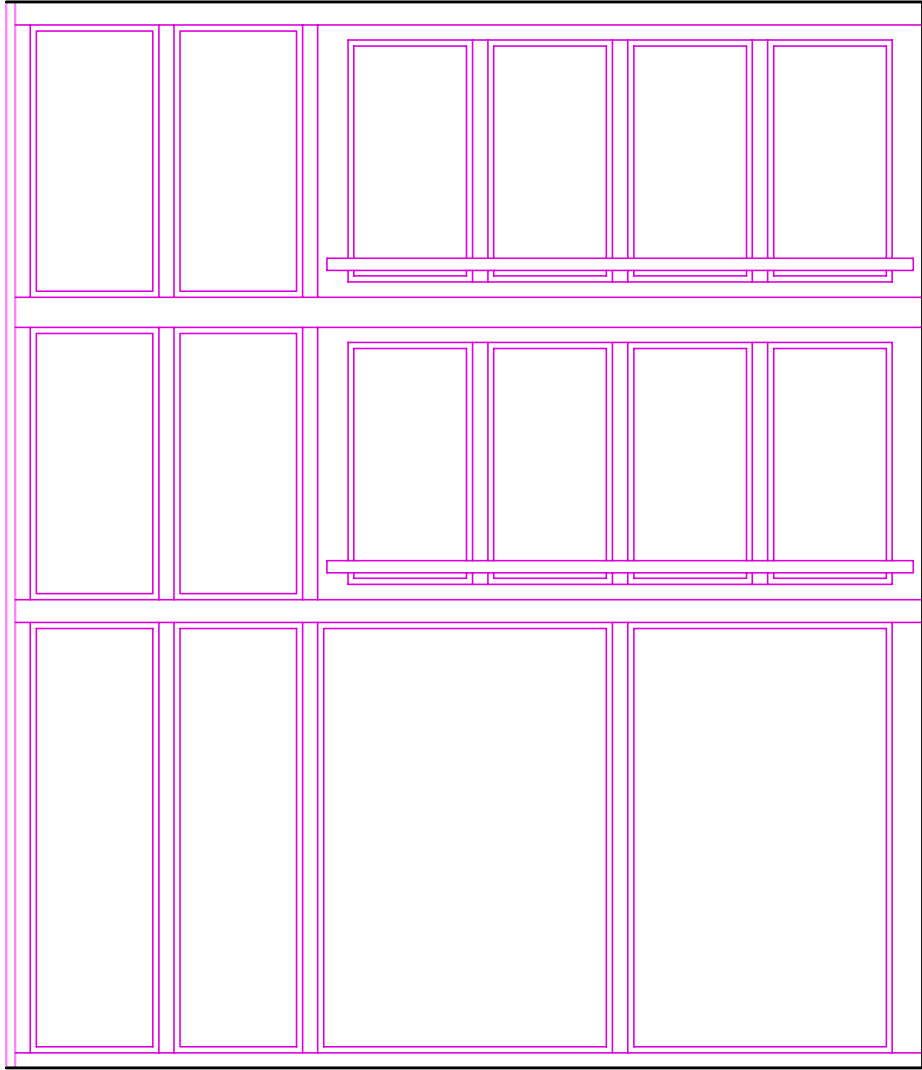
element A-5 (1 ud)
exterior



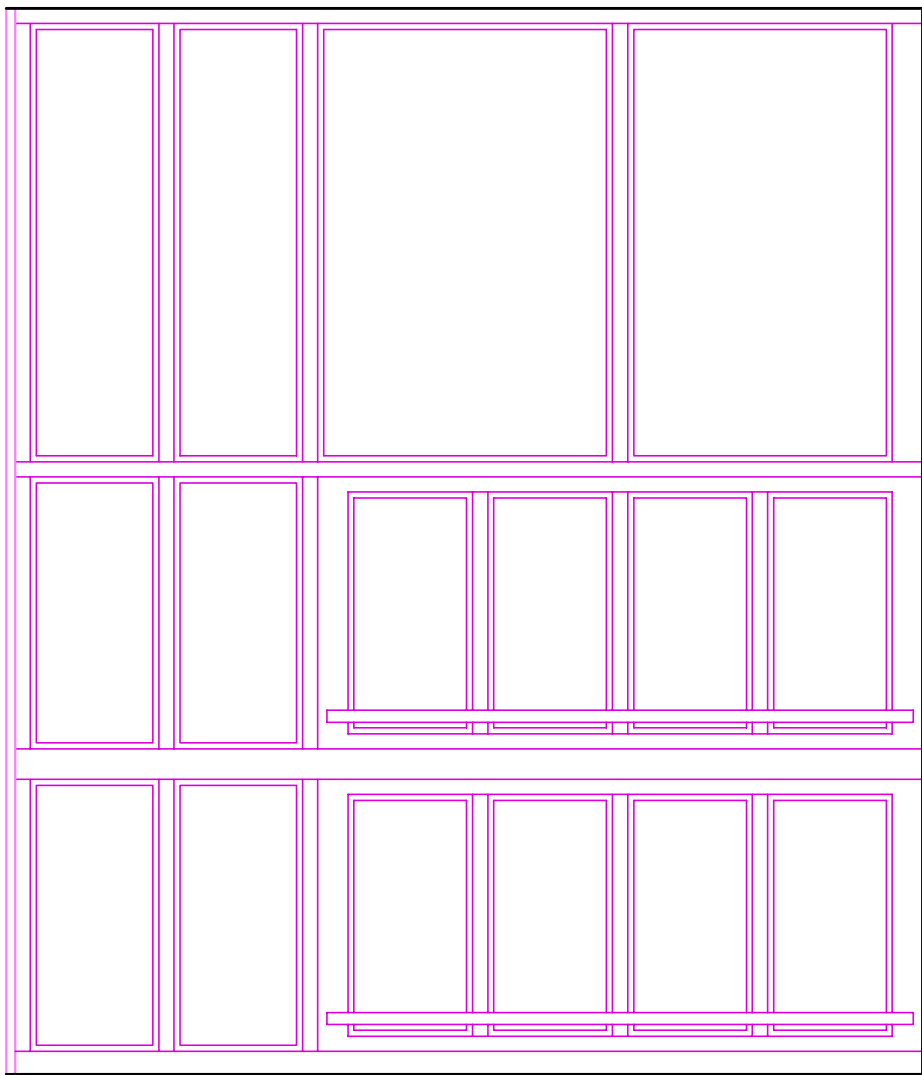
element A-4 (1 ud)
vestibul



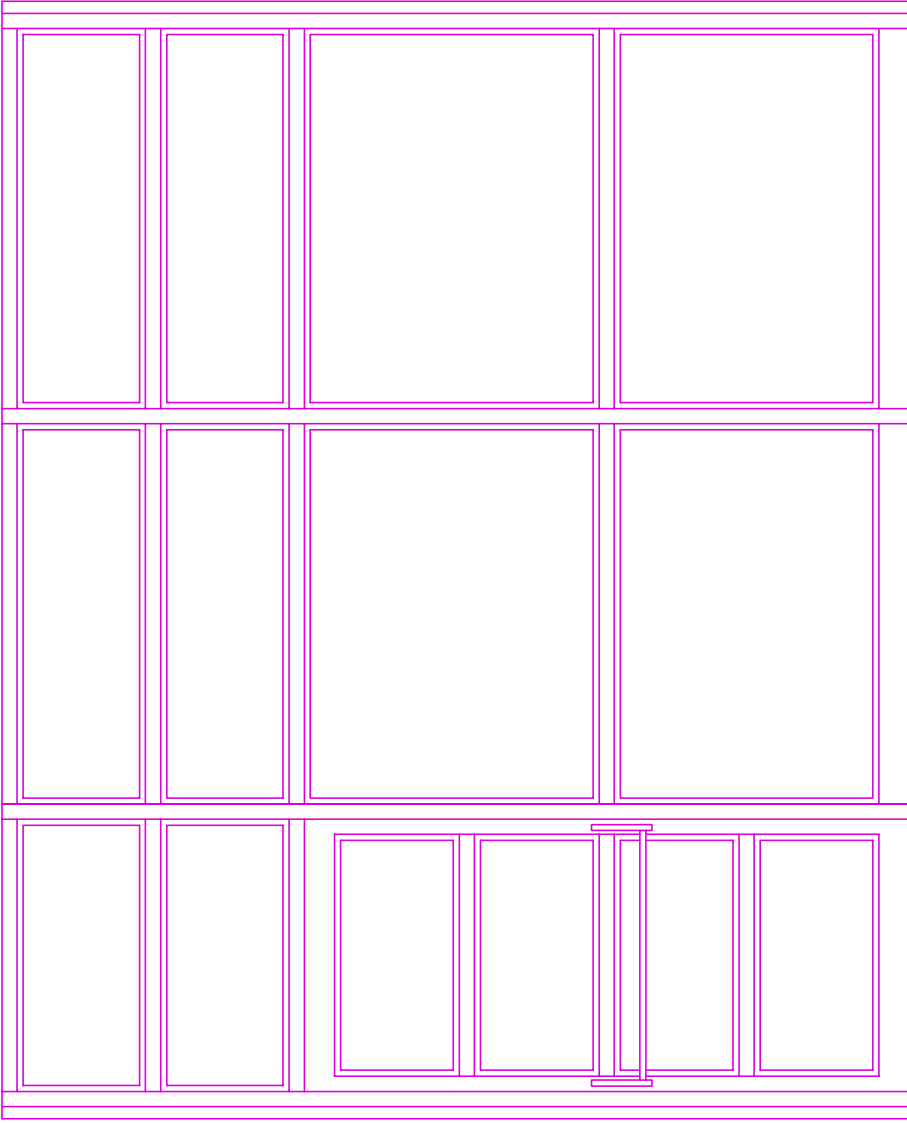
element A-3 (3 ud)
element A-3a (1 ud)
vestibul



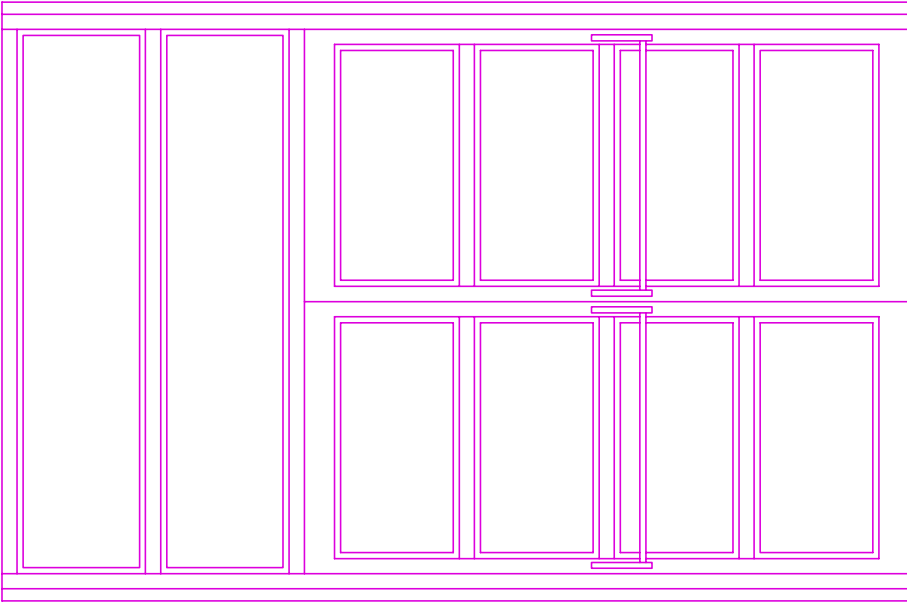
element A-2 (1 ud)
exterior



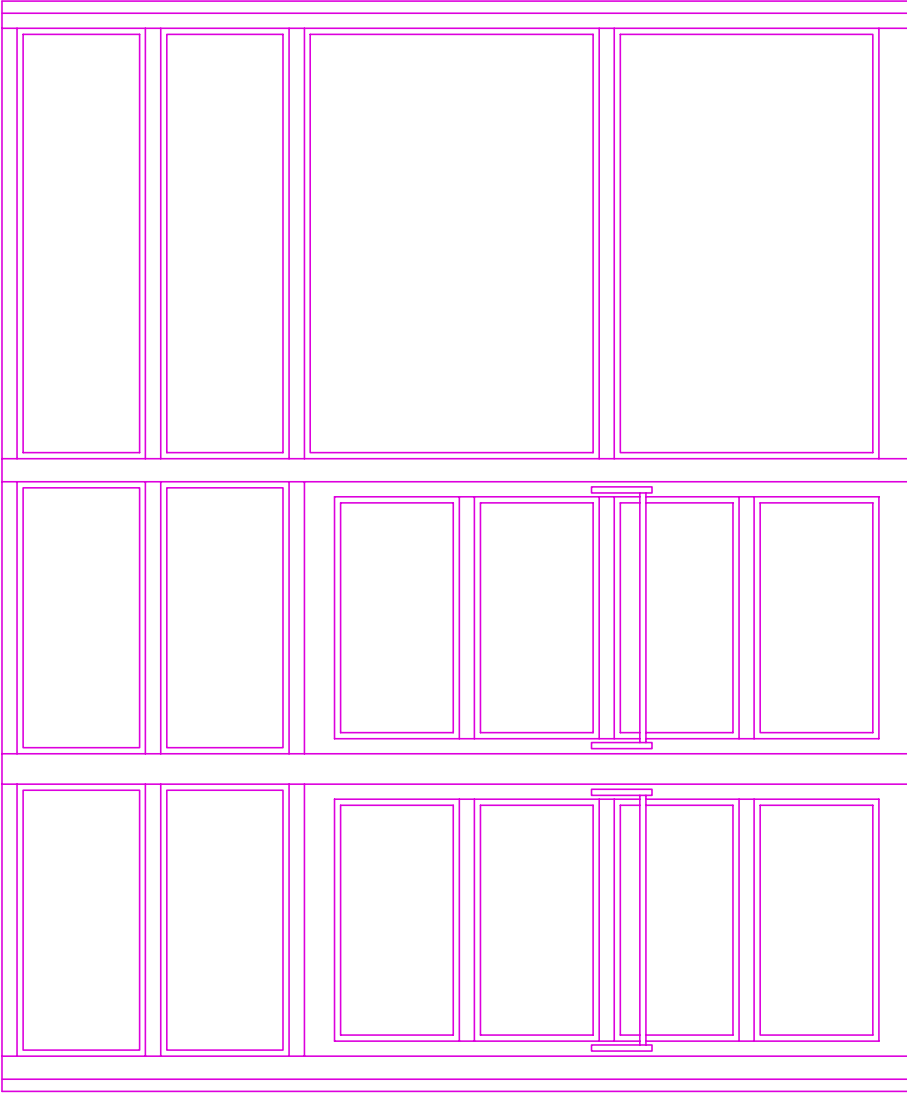
element A-1 (1 ud)
exterior



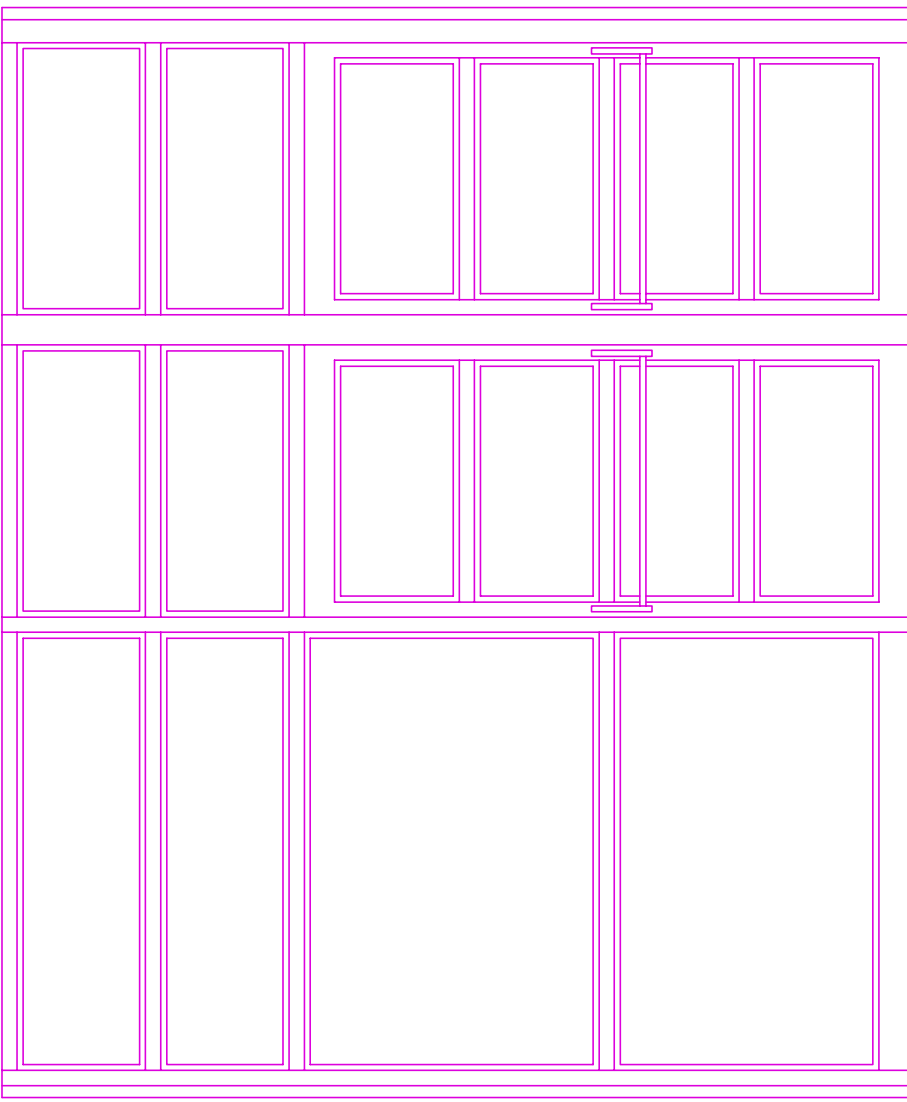
element A-5 (1 ud)
sola



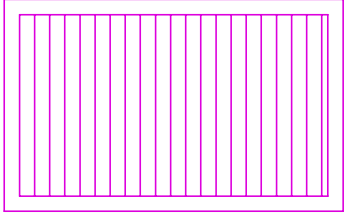
element A-3 (3 ud)
element A-3a (1 ud)
sola



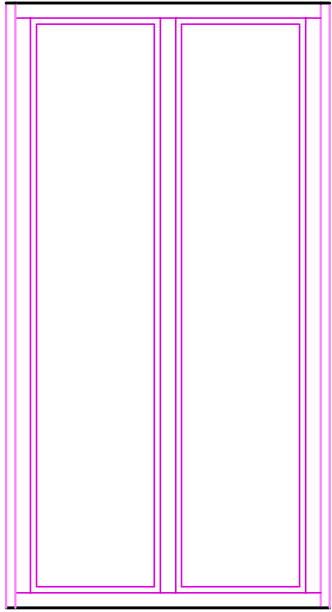
element A-2 (1 ud)
interior



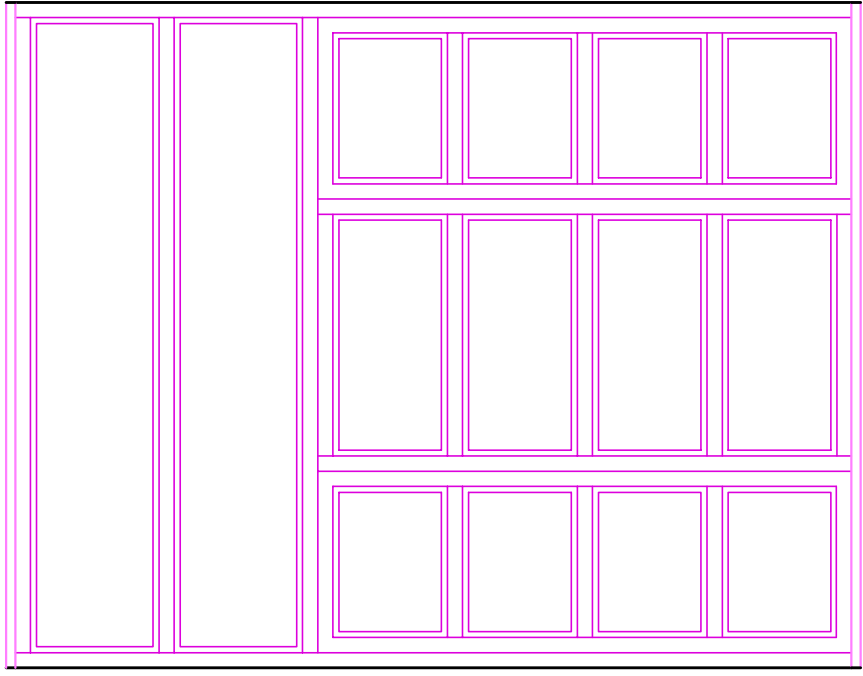
element A-1 (1 ud)
interior



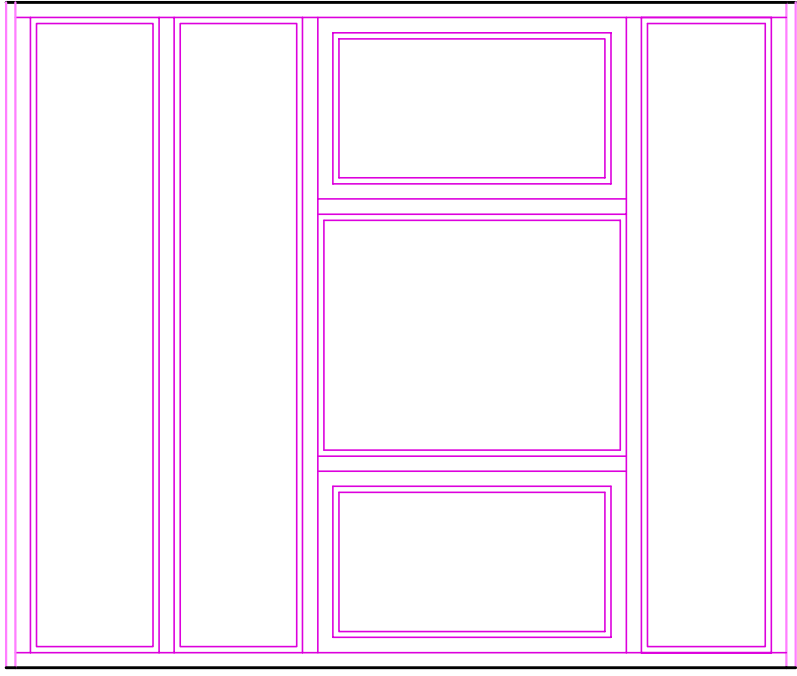
reia estíode amb reixa



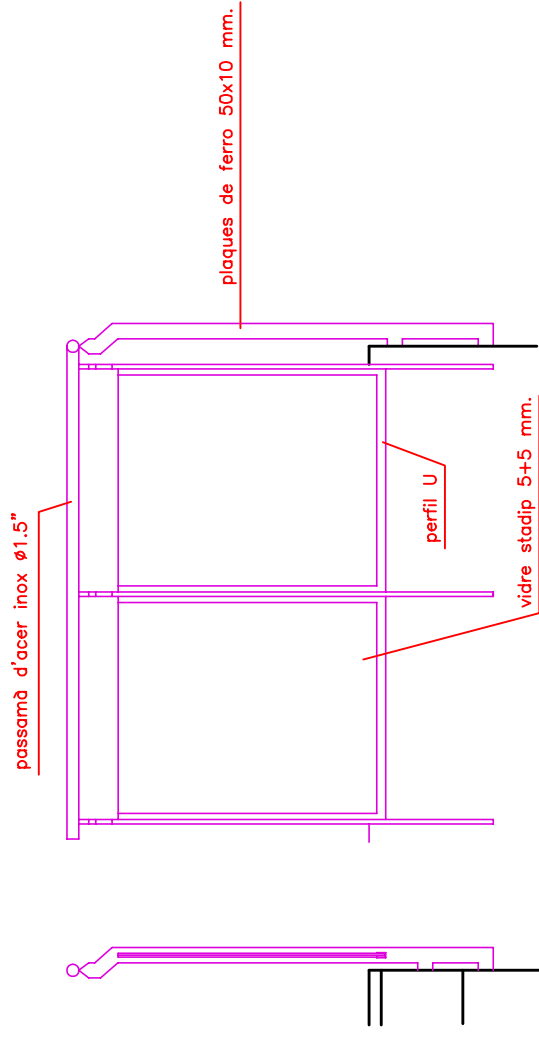
element A-10 (2 ud)
exterior



element A-8 (2 ud)
exterior



element A-7 (12 ud)
exterior



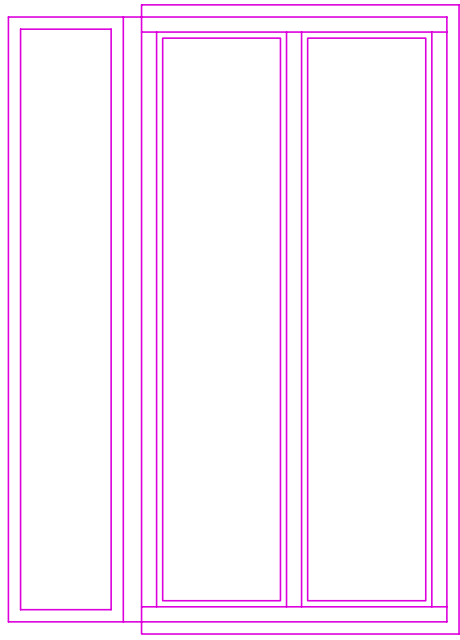
passada d'acer box 41,2"

plaques de ferro 50x10 mm.

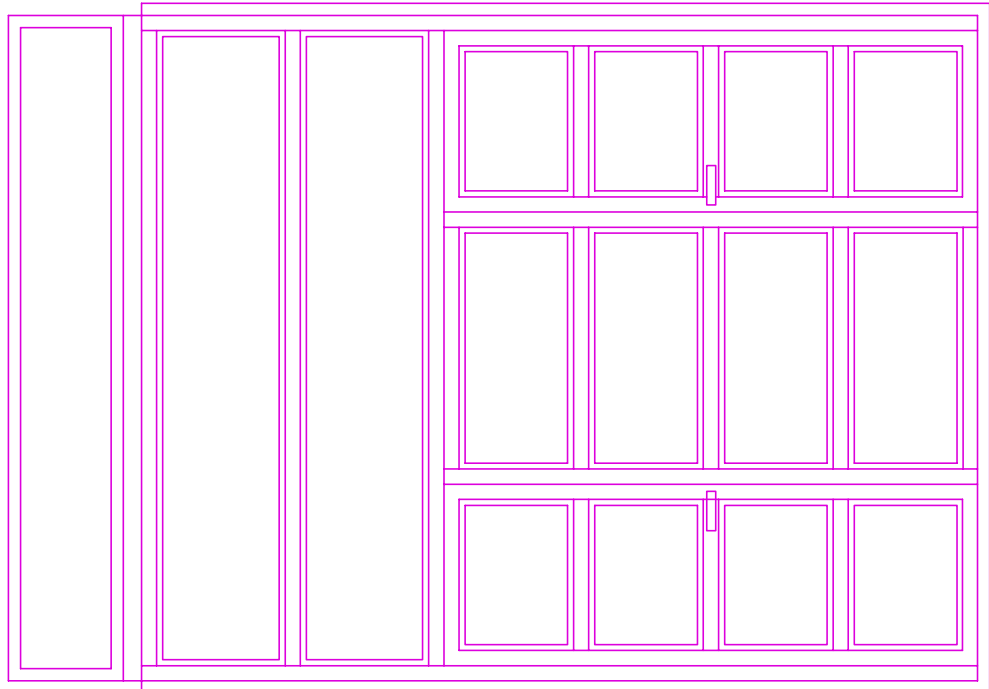
perfil U

vidre 100x10 mm.

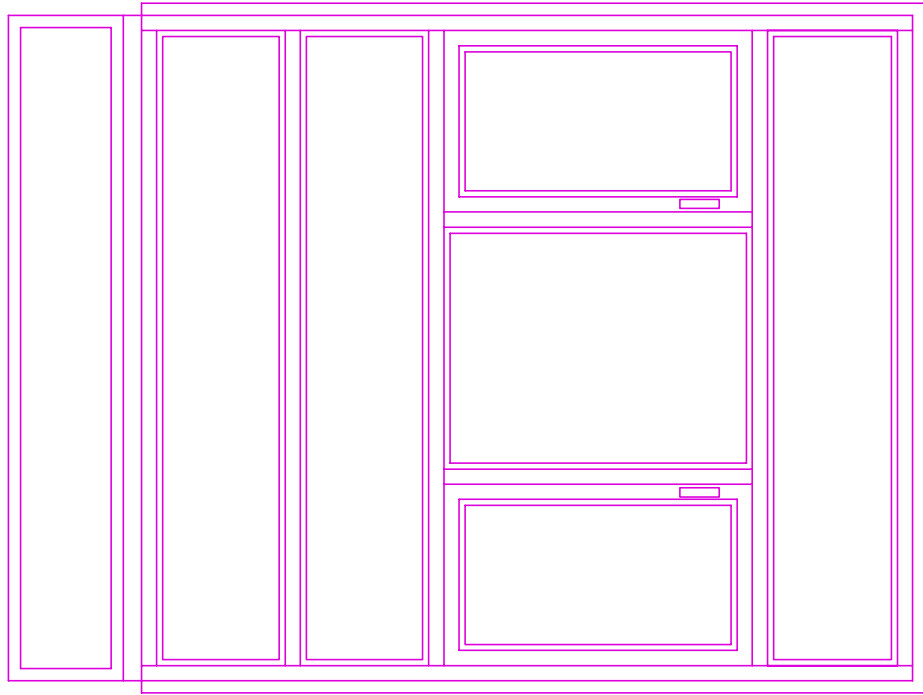
alçat barana



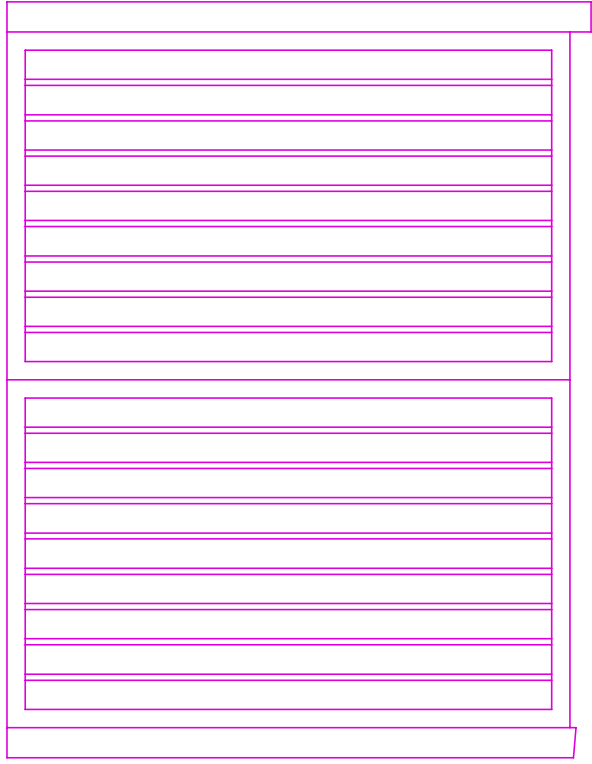
element A-10 (2 ud)
interior



element A-8 (2 ud)
interior



element A-7 (12 ud)
interior



porta tancó corner

ESTUDI D'ARQUITECTURA B.R.A.		C/JAUME I, 7 Pral. 4a. mòbil 607 86 47 27 E-mail: estudibra@terra.es		43005 TARRAGONA Tf. 977 22 13 49	
PROJECTE D'ADES T	Títol:		PROJECTE BÀSIC I D'EXECUCIÓ LLAR MUNICIPAL DE JUBILATS SANT PERE I SANT PAU		
	Situació:		Camí del Pont del Diable Urb. Sant Pere i Sant Pau		
	Municipi:		Comarca: Tarragonès		
PROMOTOR:					
AJUNTAMENT DE TARRAGONA					
PLANOL: DETALLS ALUMINI	escala:		N.		4.2
	data:		n. ref.		
L'Arquitecte		novembre 2.009		28.06C	
		Josep M. Bartolomé i Anguela			